

SCOTTSDALE AIRPARK

OFFICE CONDOMINIUM FOR LEASE 2,230± SF OFFICES AT RAINTREE CENTER

8970 E Raintree Drive | Suite 200 | Scottsdale, Arizona 85260



FEATURES:

- Light & bright
- Freshly painted
- Reception
- Three (3) offices
- Open office areas
- Kitchen
- Cubicle
- Closet
- Laminate wood flooring throughout
- 2 FREE covered parking spaces included!

FOR MORE INFORMATION PLEASE CONTACT:



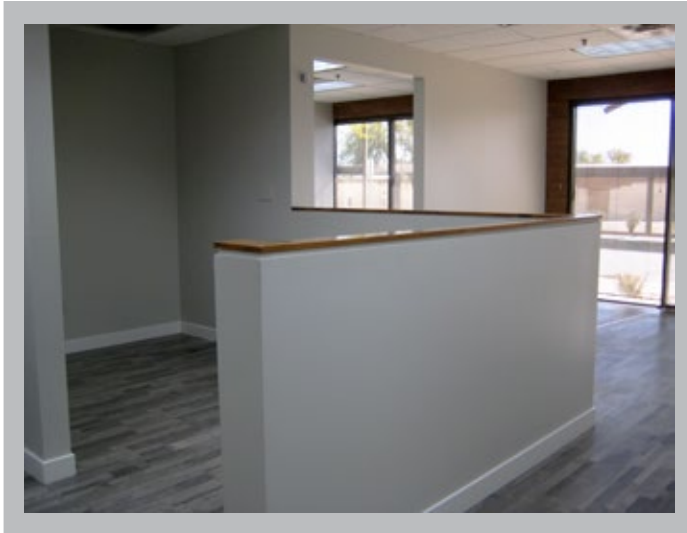
JOHN QUATRINI
Associate Broker
john@shellcommercial.com
C 602.859.0506



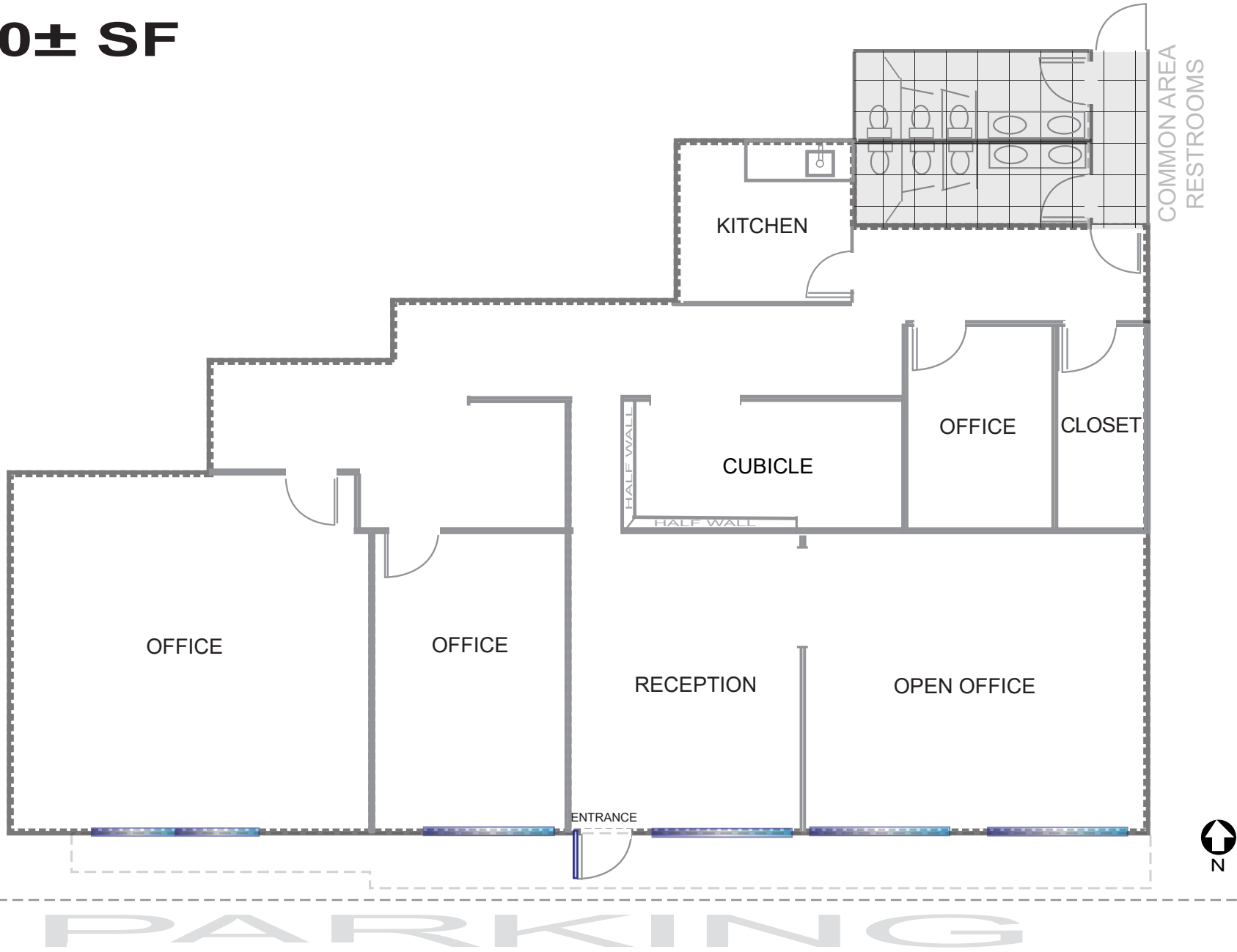
SUZANNE ENRIGHT
Senior Associate
suzanne@shellcommercial.com
C 602.471.2981

Office Phone: 480.443.3992
shellcommercial.com
16410 N 91st St | Suite 112
Scottsdale, AZ 85260



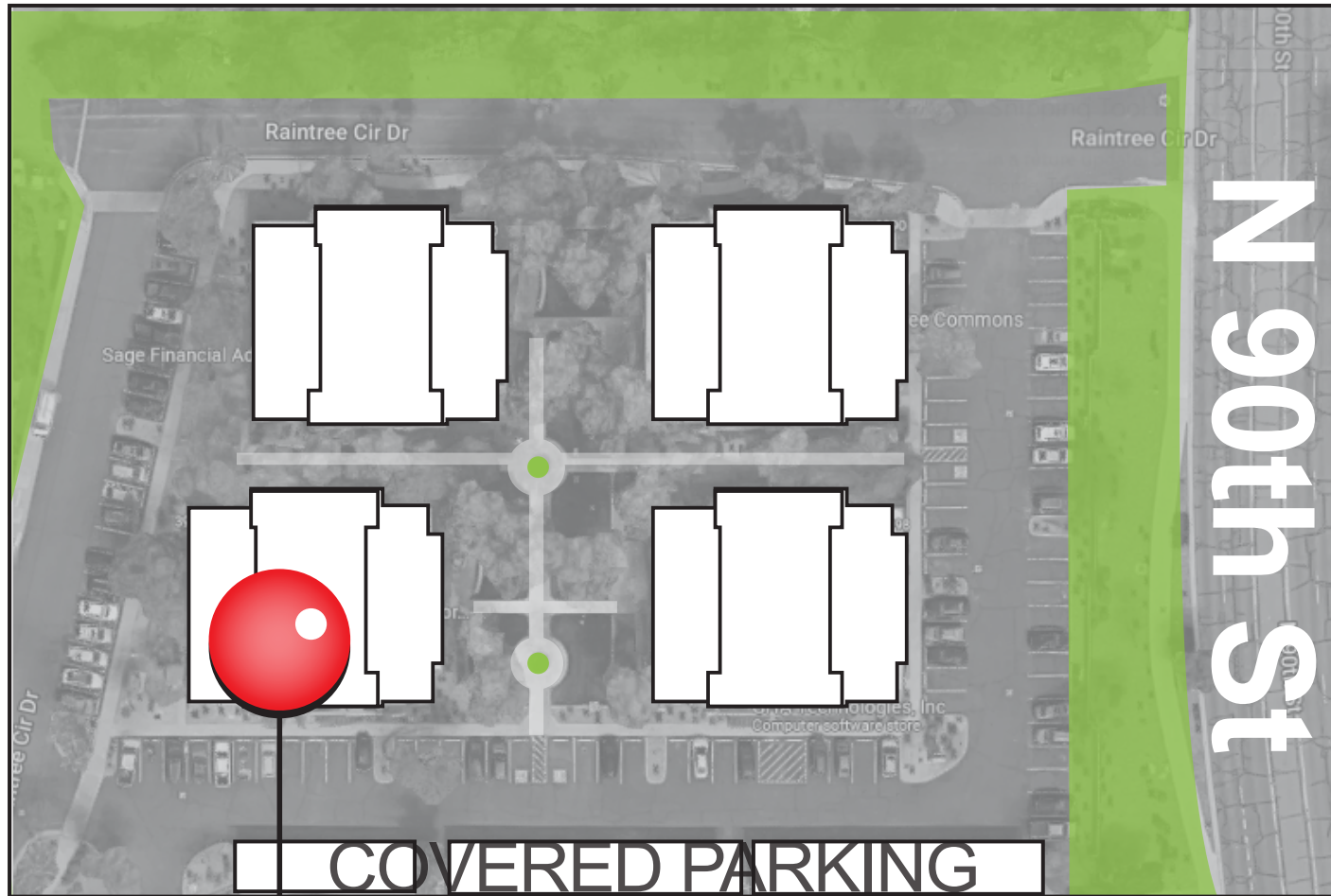


2,230± SF



NOT TO SCALE All information furnished regarding property for sale, rental or financing is from sources deemed reliable, but no warranty or representation is made to the accuracy thereof and same is submitted to errors, omissions, change of price, rental or other conditions, prior to sale, lease or financing or withdrawal without notice. No liability of any kind is to be imposed on the broker herein. This information has been secured from sources deemed reliable, however, we make no warranties as to its accuracy.

OFFICES AT RAINTREE CENTER



Suite 200





- Easy access to Loop 101 Freeway on-ramp/off-ramp at Raintree Drive
- Surrounded by North Scottsdale's finest amenities and shopping destinations, including Scottsdale Quarter, Kierland Commons, Kierland Commons, and the Scottsdale

SUBJECT

